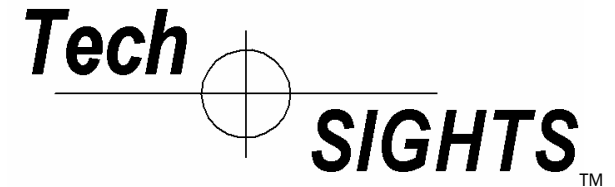
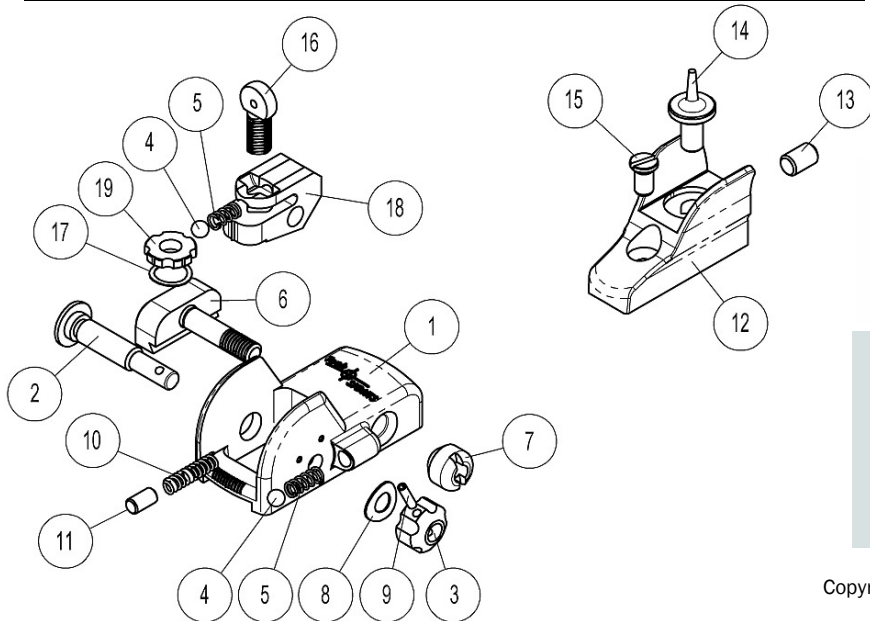


ITEM NO	PART NUMBER	DESCRIPTION	QTY	PRICE EACH
1	TS00173	SIGHT BASE	1	\$20.00
2	TS00107	WINDAGE SCREW, A2	1	\$3.00
3	TS00170	KNOB	1	\$8.00
4	TS00136	BALL, .125" DIA CHROME	2	\$1.00
5	TS00135	ELEVATION DETENT SPRING	2	\$1.00
6	TS00238	LOCK BLOCK ASSY	1	\$8.50
7	TS00239	NUT	1	\$5.00
8	TS00168	DISC SPRING	1	\$2.00
9	TS00017	ROLL PIN	1	\$0.50
10	TS00116	DETENT SPRING	1	\$1.50
11	TS00169	STABILIZER PLUNGER	1	\$1.50
12	TS00174	FRONT SIGHT BASE	1	\$12.00
13	TS00142	SOCKET SET SCREW 8-32 X .25"	1	\$0.75
14	TS00175	POST	1	\$5.00
15	TS00205	SCREW, 6-48	3	\$2.00
16	TS00134	APERTURE--.062 DIA	1	\$8.00
17	TS00131	SPRING WASHER, ELEVATION	1	\$2.00
18	TS00132	ELEVATION BASE	1	\$10.00
19	TS00133	DIAL	1	\$5.00
20	TS00268	ADAPTER PLATE (See Figure 3)	1	\$11.00
21	TS00273	DOVETAIL LOCK BLOCK (See Fig. 2)	1	\$6.00



ASSEMBLY INSTRUCTIONS for the SAV200 SIGHTS



Tech-SIGHTS, LLC
Hartsville, SC 29550

Phone: 843-332-8222
Email: sales@Tech-SIGHTS.com
www.Tech-SIGHTS.com

**Receiver Mounted Aperture Sights
for the
Savage Mark II**

Tech SIGHTS™

Assembly Instructions for the SAV200 Sights

1. ALWAYS POINT MUZZLE IN A SAFE DIRECTION.

2. Pull the bolt to the rear.

3. CHECK TO SEE THAT THERE ARE NO CARTRIDGES IN THE CHAMBER OR MAGAZINE.

4. Remove the original front sight from the barrel by supporting the barrel close to the end. Use a punch to drive the front sight blade out of the dovetail slot in the barrel from left to right. (Fig. 1)

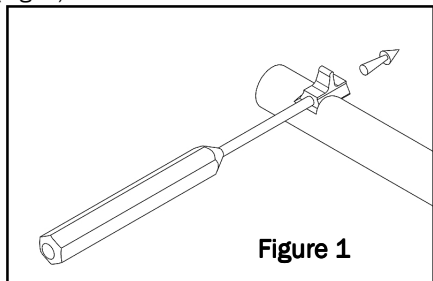


Figure 1

5. Apply a small amount of removable thread locker to the TS00273 Dovetail Lock Block and dovetail slot in the barrel.

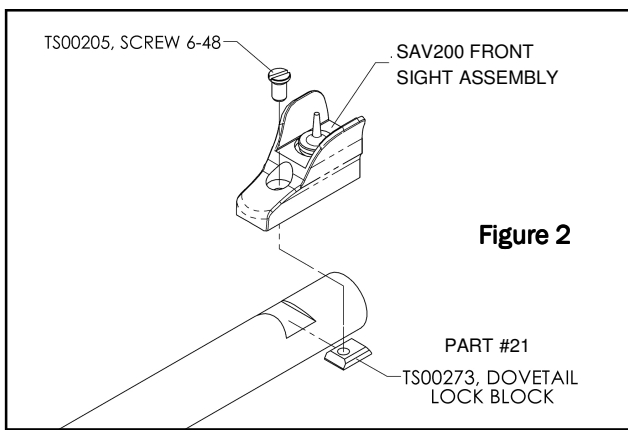


Figure 2

6. Slide or tap the Dovetail Lock Block into the dovetail slot until the tapped hole is centered on the barrel. (Fig. 2)

7. Apply a drop of removable thread locker to the threaded hole in the Dovetail Lock Block. (Fig. 2)

8. Align the SAV200 Front Sight Assembly on the barrel and start to thread the TS00205 Screw 6-48 into the Dovetail Lock Block. Then tighten the screw. (Fig. 2)

9. Apply a small amount of removable thread locker to the two TS00205 Screws, 6-48. (Fig. 3)

10. Install the TS00268 Adapter using the two 6-48 screws and tighten.

11. Place the SAV200 Rear Sight Assembly on the TS00268 Adaptor.

12. Apply a small amount of removable thread locker to the threads on the TS00238 Lock Block Assembly. Insert the Lock Block Assembly through the Rear Sight Assembly. Assemble the TS00239 Nut and tighten. (Fig. 3)

13. By sighting the rifle with the installed Tech-SIGHTS check the front sight to see if it is sitting straight up on the barrel. If the front sight is tipped to the right or left, slightly loosen the 6-48 screw and lightly push the front sight in the direction required to straighten the sight. Tighten the screw and then recheck the alignment. Repeat until the sight is properly aligned. After the thread locker is cured the position of the front sight assembly will be locked securely.

14. This completes the installation of the SAV200 sight system.

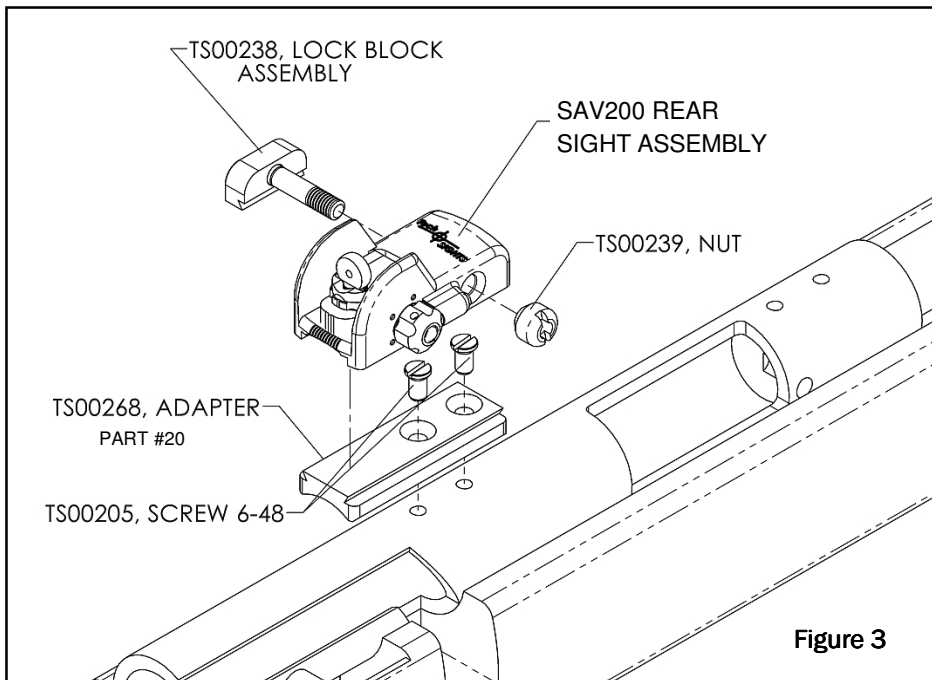
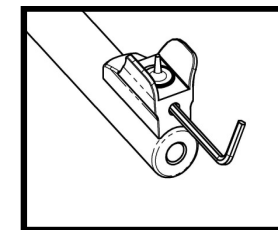
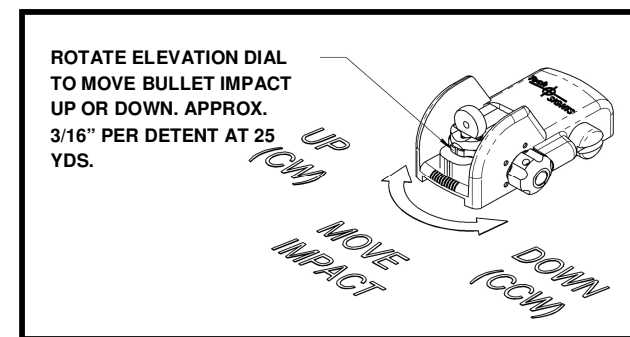
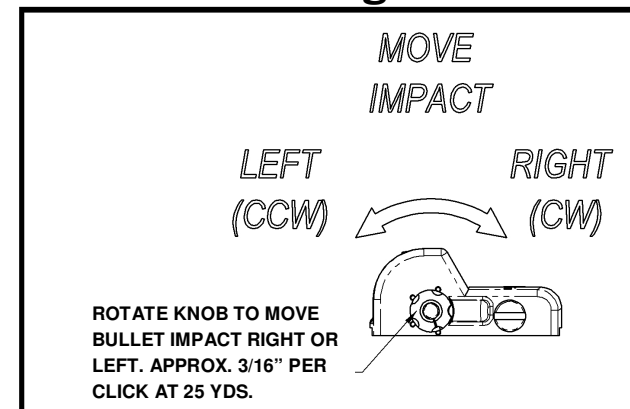


Figure 3

Sight Adjustments for the SAV200 Sights



Check Screw for tightness